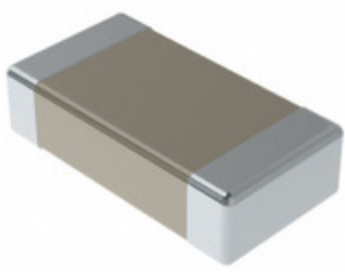


C1206X393J4JACAUTO



Part Number: [C1206X393J4JACAUTO](#)
Manufacturer: [KEMET](#)
Description: CAP CER 0.039UF 16V U2J 1206
Data sheet: [FT-CAP, U2J Dielectric 10-50 VDC](#)

RoHS Status: Lead free / RoHS Compliant
Ship From: Hong Kong
Shipment Way: DHL/Fedex/TNT/UPS/EMS

Images are for reference only.
 See Product Specifications for product details.
 Buy C1206X393J4JACAUTO with confidence from
 Component-World.HK, 1 Year Warranty

[Request For Quotation](#)

PRODUCT PARAMETER

Part Number	C1206X393J4JACAUTO	Manufacturer	KEMET
Description	CAP CER 0.039UF 16V U2J 1206	Lead Free Status / RoHS Status	Lead free / RoHS Compliant
Quantity Available	218132 pcs	Data sheet	FT-CAP, U2J Dielectric 10-50 VDC
Category	Capacitors	Voltage - Rated	16V
Tolerance	±5%	Thickness (Max)	0.035" (0.88mm)
Temperature Coefficient	U2J	Size / Dimension	0.130" L x 0.063" W (3.30mm x 1.60mm)
Series	FT-CAP	Ratings	AEC-Q200
Packaging	Tape & Reel (TR)	Package / Case	1206 (3216 Metric)
Operating Temperature	-55°C ~ 125°C	Mounting Type	Surface Mount, MLCC
Moisture Sensitivity Level (MSL)	1 (Unlimited)	Lead Style	-
Lead Spacing	-	Lead Free Status / RoHS Status	Lead free / RoHS Compliant
Height - Seated (Max)	-	Features	Soft Termination
Failure Rate	-	Detailed Description	0.039µF ±5% 16V Ceramic Capacitor U2J 1206 (3216 Metric)
Capacitance	0.039µF	Applications	Automotive, Boardflex Sensitive

Component-World.com is a Reliable Stocking Distributor of Electronic Components. We specialize in all KEMET series electronic components. We have 218132 pieces of KEMET C1206X393J4JACAUTO in stock available now. Request a quote from electronics components distributor at Component-World.com, our sales team will contact you within 24 hours.
 RFQ Email: info@Components-World.com

RELATED PRODUCTS

	Part#: C1206X393J8JACAUTO Description: CAP CER 0.039UF 10V U2J 1206	Manufacturers: KEMET	RFQ
	Part#: C1206X393J5JAC7800 Description: CAP CER 0.039UF 50V U2J 1206	Manufacturers: KEMET	RFQ
	Part#: C1206X393K4HAC7800 Description: CAP CER 1206 39NF 16V ULTRA STAB	Manufacturers: KEMET	RFQ
	Part#: C1206X393J3JAC7800 Description: CAP CER 0.039UF 25V U2J 1206	Manufacturers: KEMET	RFQ
	Part#: C1206X393J8HAC7800 Description: CAP CER 1206 39NF 10V ULTRA STAB	Manufacturers: KEMET	RFQ
	Part#: C1206X393G8HACAUTO Description: CAP CER 1206 39NF 10V ULTRA STAB	Manufacturers: KEMET	RFQ
	Part#: C1206X393K4HACAUTO Description: CAP CER 1206 39NF 16V ULTRA STAB	Manufacturers: KEMET	RFQ
	Part#: C1206X393J8JAC7800 Description: CAP CER 0.039UF 10V U2J 1206	Manufacturers: KEMET	RFQ
	Part#: C1206X393G8JACAUTO Description: CAP CER 0.039UF 10V U2J 1206	Manufacturers: KEMET	RFQ
	Part#: C1206X393K3JACAUTO Description: CAP CER 0.039UF 25V U2J 1206	Manufacturers: KEMET	RFQ
	Part#: C1206X393G8HAC7800 Description: CAP CER 1206 39NF 10V ULTRA STAB	Manufacturers: KEMET	RFQ
	Part#: C1206X393J8HACAUTO Description: CAP CER 1206 39NF 10V ULTRA STAB	Manufacturers: KEMET	RFQ
	Part#: C1206X393J5JACAUTO Description: CAP CER 0.039UF 50V U2J 1206	Manufacturers: KEMET	RFQ
	Part#: C1206X393K3JAC7800 Description: CAP CER 0.039UF 25V U2J 1206	Manufacturers: KEMET	RFQ
	Part#: C1206X393J3JACAUTO Description: CAP CER 0.039UF 25V U2J 1206	Manufacturers: KEMET	RFQ
	Part#: C1206X393J4HAC7800 Description: CAP CER 1206 39NF 16V ULTRA STAB	Manufacturers: KEMET	RFQ
	Part#: C1206X393J4HACAUTO Description: CAP CER 1206 39NF 16V ULTRA STAB	Manufacturers: KEMET	RFQ
	Part#: C1206X393J4JAC7800 Description: CAP CER 0.039UF 16V U2J 1206	Manufacturers: KEMET	RFQ
	Part#: C1206X393G8JAC7800 Description: CAP CER 0.039UF 10V U2J 1206	Manufacturers: KEMET	RFQ
	Part#: C1206X393G5JACAUTO Description: CAP CER 0.039UF 50V U2J 1206	Manufacturers: KEMET	RFQ

Related keywords for C1206X393J4JACAUTO

KEMET C1206X393J4JACAUTO	C1206X393J4JACAUTO distributor	C1206X393J4JACAUTO supplier	C1206X393J4JACAUTO price
C1206X393J4JACAUTO download datasheet	C1206X393J4JACAUTO datasheet	C1206X393J4JACAUTO stock	buy C1206X393J4JACAUTO
KEMET C1206X393J4JACAUTO	Kemet [MIL] C1206X393J4JACAUTO		